

## Deck Plan

- Presidential Suite
 ■ Glory/Victory/Oasis/Voyage Suite
 ■ Family Suite
 ■ Executive Suite
- Superior Deluxe Cabin
 ■ Deluxe Cabin
 ■ Interior Cabin



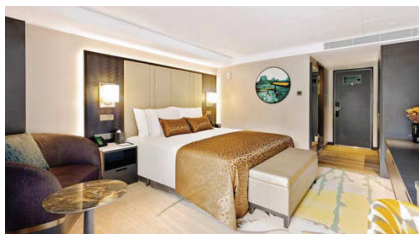


# ELEGANT AND COMFORTABLE SUITE CABINS

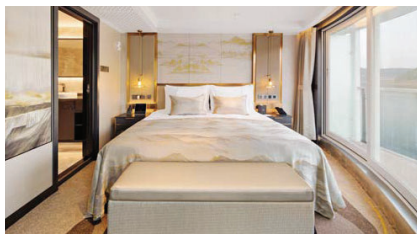
To ensure a relaxing cruise onboard our vessels, all seven types of cabins are designed to be elegant and cosy. Most feature private viewing balconies overlooking the Yangtze River, allowing guests to experience breathtaking scenery and natural wonders. Each room is arranged to create a warm and calm atmosphere, ensuring a relaxed stay for our guests.



▲ Presidential Suite



▲ Executive Suite



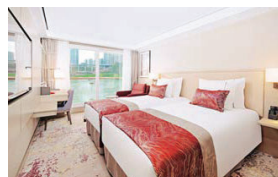
▲ Glory/Victory/Oasis/Voyage Suite



▲ Family Suite



▲ Superior Deluxe Cabin



▲ Deluxe Cabin







Sissi Café & Lounge

# A FLOATING CITY

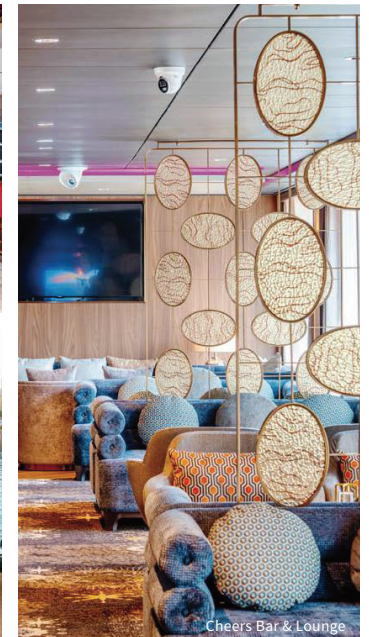
Experience the allure of a floating river town aboard our moving hotel, where the cruise ship's seven decks offer a variety of entertainment and living spaces. Immerse yourself in captivating performances, entertainment activities, and audio-visual experiences in the Century Grand Theatre. Find physical and mental relaxation in our fitness center, library, SPA massage room, bar, and sun deck. Indulge your senses in culinary delights at the dual-deck Globe Dining Room, VIP restaurant, and observation areas onboard.



Sissi Café & Lounge



Cruise Club - River Cafe



Cheers Bar & Lounge

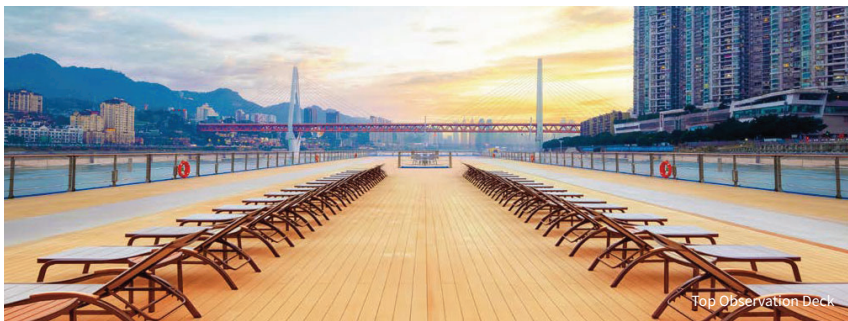


River Library





The Pavilion VIP Restaurant



Top Observation Deck



Century Grand Theater



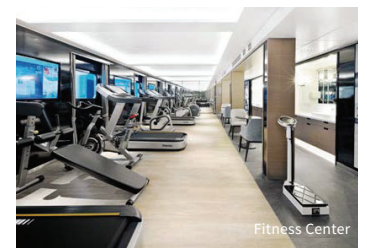
KTV



The Globe Dual Deck Dining Room



Observation Deck



Fitness Center